



HITACHI
Inspire the Next

Hitachi In Asia

Serving the World with
Our Social Innovation Business

Contents

About Hitachi Group

- 04 Hitachi Founding
- 05 Hitachi Group Identity
- 06 2024 Mid-Term Management Plan
- 07 Global Overview

About Hitachi Asia

- 09 Hitachi Asia Overview
- 10 The Management Team
- 11 Message from Chairman
- 12 Message from Managing Director

Hitachi In Asia

- 14 Hitachi in Asia
- Business Groups
 - 15 ▶ Digital Systems & Services
 - 16 ▶ Green Energy & Mobility
 - 17 ▶ Connective Industries
 - 18 ▶ Automotive Systems Business
- 19 Recent Achievements

About Sustainability & CSR

27 Directory



Digital Systems & Services



Green Energy & Mobility



Connective Industries



Automotive Systems Business

About Hitachi Group

Hitachi's Founding

Hitachi Group Identity

2024 Mid-Term Management
Plan

Global Overview



Hitachi Founding



NAMIHEI ODAIRA

Hitachi Founder

Since its founding in 1910, Hitachi has held firm to the Mission of “contributing to society through the development of superior, original technology and products.” The creation of our first product, 5-horsepower electric motor, is a testament of Hitachi’s technological capability. Today, we are committed to devising innovative solutions that combine products, services and highly sophisticated IT to respond and adapt to evolving needs.

Hitachi believes in contributing through our Social Innovation Business. This means that we study the problems that people face daily, assess how existing technology can be used to solve those problems, then anticipate and analyze the challenges ahead. Through careful, detailed research, Hitachi creates new technologies that not only make life better, but also make the world a better place to live in.

Hitachi’s Vision statement emphasizes our tireless quest for constant improvement: “Hitachi delivers innovations that answer society’s challenges. With our talented team and proven experience in global markets, we can inspire the world.” We are devoted to serving our clients’ needs; with our customer-driven philosophy, Hitachi continues to be a reliable partner in bringing the latest and most advanced solutions to meet our customers’ demands.

The Source of Hitachi’s Unique Character

Every company has an identity - a uniqueness or individually shaped by its unique corporate principle or history. The identity becomes the foundation of its values and serves as a guideline for the behavior of the company’s employees, clarifying the path the company should follow and how employees should go about their work.

If every employee takes actions based on the company’s identity, this will ensure originality and consistency in corporate business activities that will emphasize a company’s individual character. This distinctive character will give birth to a brand embodying values that are unique to each company.

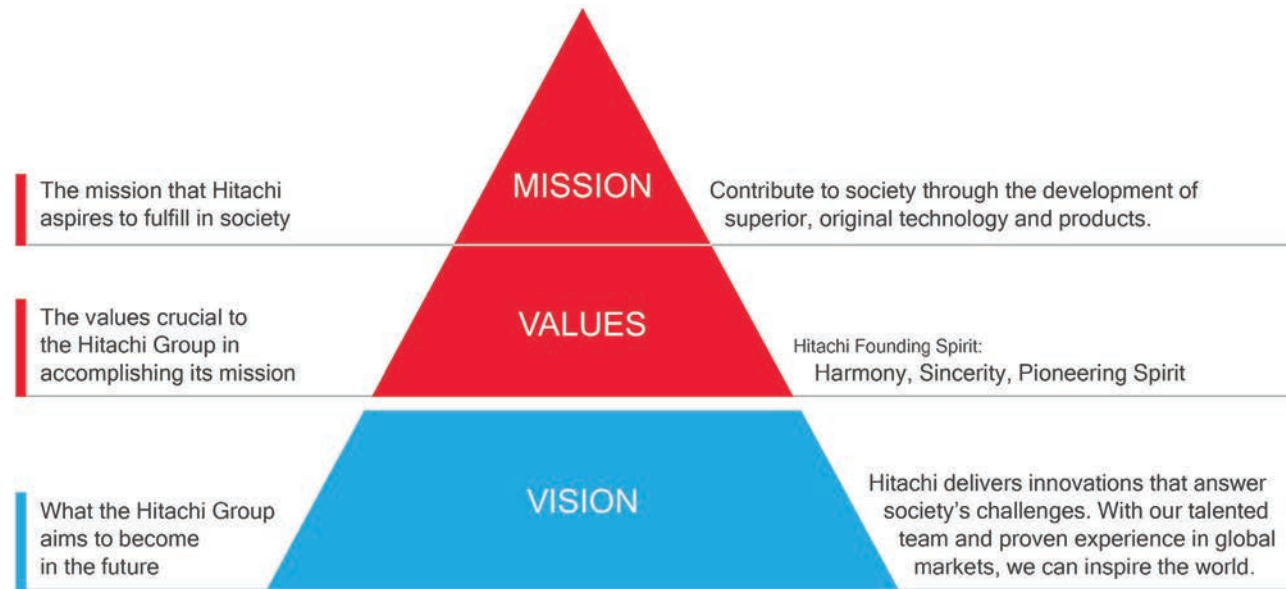
“

Contribute to society through the development of superior, original technology and products.

Hitachi Founder, Namihei Odaira

”

Hitachi Group Identity



Since our founding in 1910, the Hitachi's Mission and Values have been carefully passed down to generations of employees. These principles allow us to deliver our best to our customers and to the world.

Guided by our Mission and Values, a new Vision was birthed. Hitachi's Vision expresses our goal to be a leader in Social Innovation Business. A Vision that spurs us to tackle important social issues on a global scale. A Vision to provide total solutions for sustainable living. A Vision that creates value that will last generations.

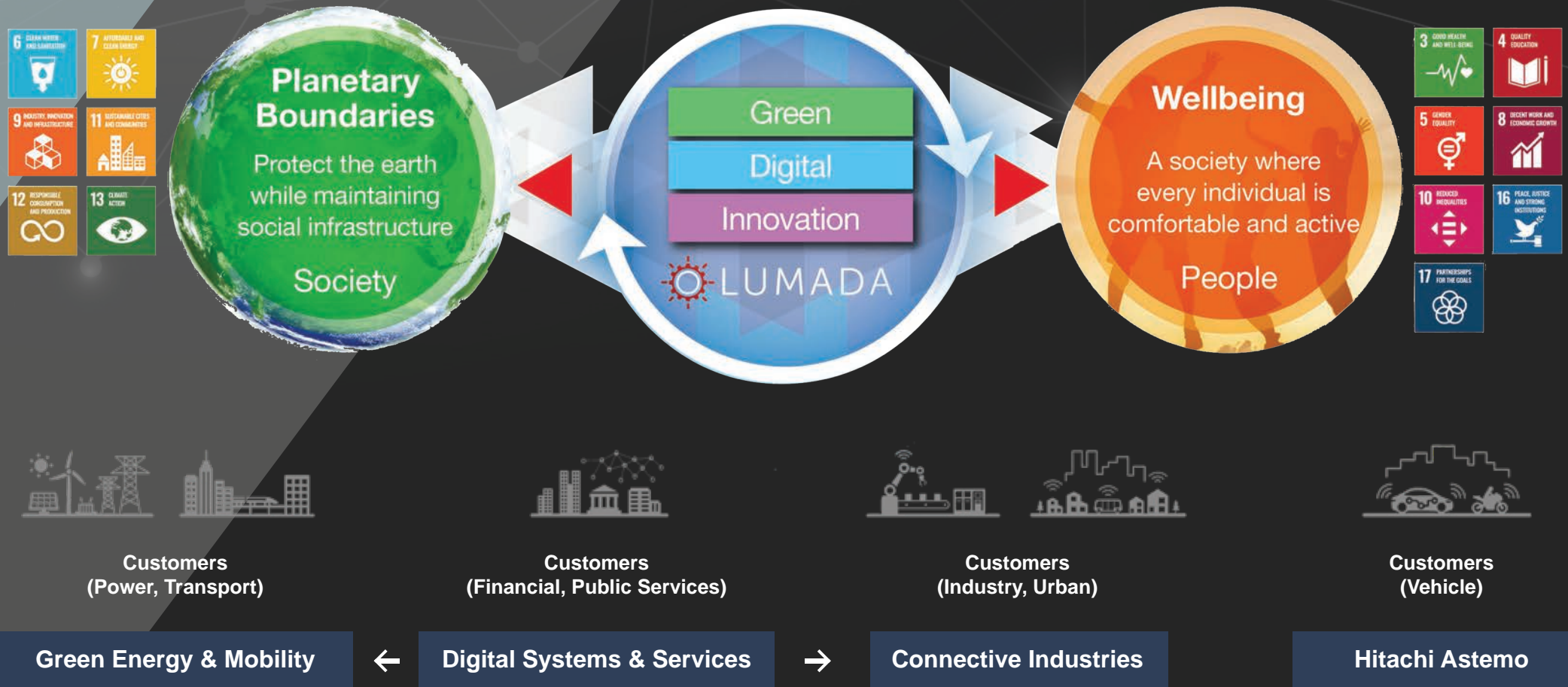
To realise Hitachi's Vision, we believe in identifying issues from customers' perspectives and co-creating solutions together with our customers. We strive to drive innovation and "Inspire the Next" by refining technologies and developing new ones to meet tomorrow's challenges.

This reflects our aspirations for the future, for our customers, as we continue to provide answers to society's challenges globally.

For more details, please visit our brand site at: <https://www.hitachi.com/corporate/about/identity>

2024 Mid-Term Management Plan

Supporting people's quality of life with data and technology that foster a sustainable society



Global Overview

Founded in

1910

Director
Representative Executive Officer,
President & CEO

Keiji Kojima

Numbers of Group Companies

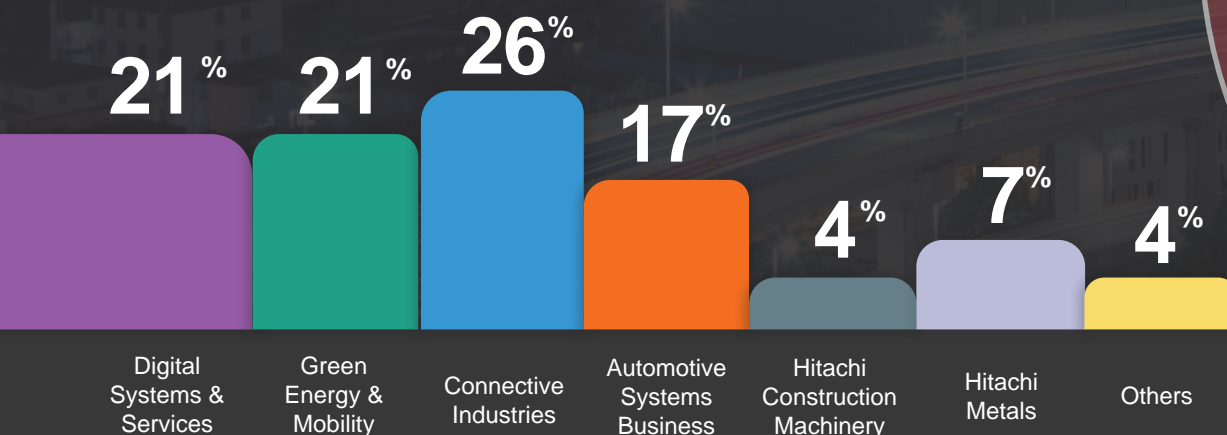
696

(Japan: 119, Overseas: 577)

Number of Employees

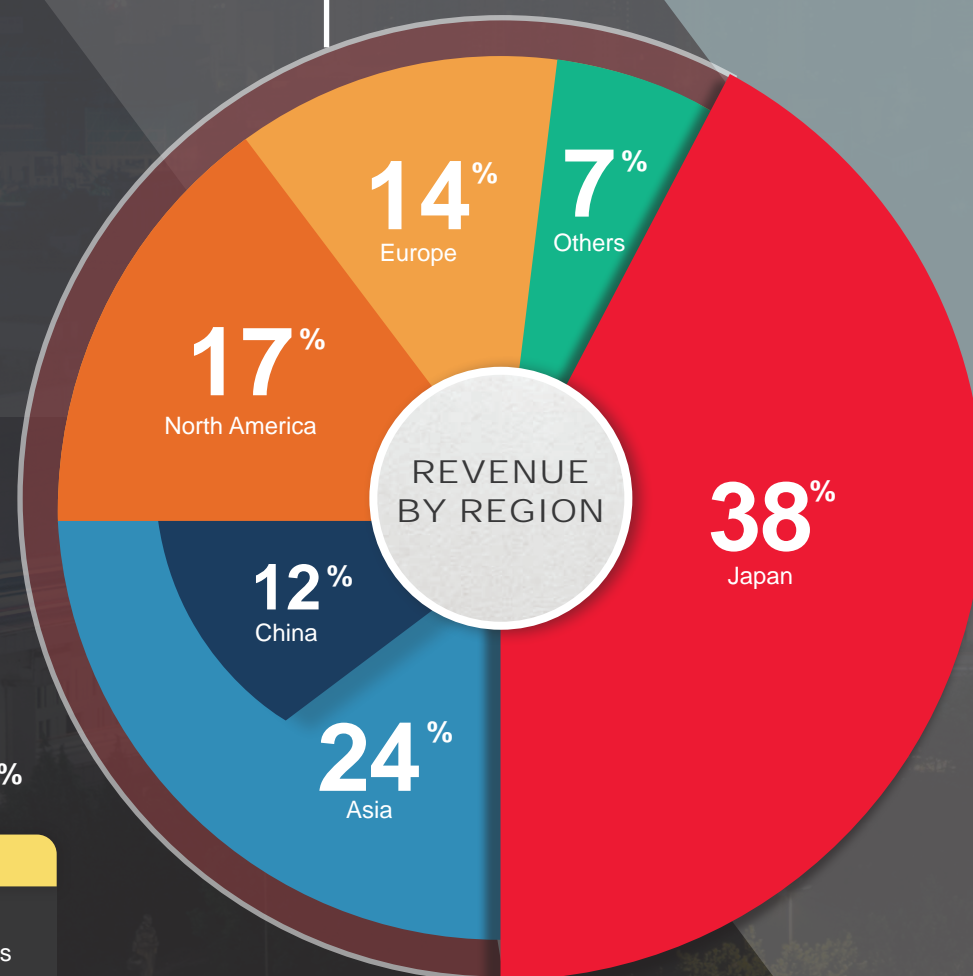
322,525

REVENUE BY BUSINESS SEGMENTS



TOTAL **10,881.1** BILLION YEN (FY2022)

62% Overseas Revenue Ratio



About Hitachi Asia

[Hitachi Asia Overview](#)

[The Management Team](#)

[Message from Chairman](#)

[Message from Managing Director](#)



Hitachi Asia Overview

OUR MISSION

Solving social issues in ASEAN for the next generation by uniting All Hitachi

OUR FOUNDING

1989

33 years of establishment

Co-creating solutions to realise a more sustainable world



OUR FOCUS

Improve people's well-being while protecting the earth through our enhanced focus on Green, Digital and Innovation

OUR PRESENCE

7

Countries

- Indonesia
- Malaysia
- Myanmar
- Philippines
- Singapore
- Thailand
- Vietnam

The Management Team



Gerald Jiro Hane Ph.D.
General Manager,
Corporate Strategy

Florence Chow
Chief Human Resource
Officer

Takatoshi Sasaki
Managing Director

Kojin Nakakita
Chairman

Tang Chay Wee
Chief Operating Officer

Quek Wei Ling
General Counsel

Christopher Mar
Chief Financial Officer



Koji Hachiya
Country Head
Indonesia



Chew Huat Seng
Country Head
Malaysia



Daiju Nakamura
Country Head
Myanmar



Hiroshi Katagiri
Country Head
Philippines



Yoshihiro Sugeta
Country Head
Thailand



Shinichi Tokushima
Country Head
Vietnam

Message from Chairman



In keeping up with the fast-changing world, Hitachi launched the new Mid-term Management Plan (MTMP) 2024 to incorporate new business strategies to support new and growing trends in the areas of Green, Digital and Innovation. We will focus our IT, OT, and products' expertise through the restructured business units namely, Green Energy & Mobility, Digital Systems & Services, and Connective Industries to better address societal challenges and future-proof infrastructure.

At Hitachi, we take pride in our innovations that embody a harmonious coexistence with nature, to support quality of life and business operations within planetary boundaries. Backed by these solutions, we strive to accelerate transformations and grow together with our stakeholders.

Since our humble beginning in 1989, Hitachi Asia has achieved many significant milestones that include the establishment of regional offices in the ASEAN region, completion of major integrated projects, as well as partnerships with governments in the areas of climate change and digital transformation.

ASEAN remains a dynamic and diverse region, with infinite possibilities to discover. Though there has been dramatic growth in the last half-century, the reliance on markets and matureness of social infrastructure differs greatly across countries.

Therefore, we believe in co-creation which means working closely with our customers, to identify pressing issues and deliver the essential solutions.

We thank all our customers, new and long-standing, for their trust and support in us. We will continue to deliver superior products and solutions that cater to the real needs of the society.

People are at the heart of everything we do at Hitachi. We remain dedicated to "Powering Good" as we continue our corporate mission to improve the quality of life. At the same time, we believe in doing our part for the environment by honouring our pledge towards carbon neutrality and fostering a sustainable society.



We will continue providing a suite of integrated solutions to our customers that will resolve social issues. With a focus in the green, digital and innovations sectors, we will chart a new era of innovation and technology with our stakeholders.

KOJIN NAKAKITA
Chairman

Message from Managing Director

The world that we live in is a complex one. New challenges such as rising inflation and resource scarcity in the wake of climate change are threatening our region's stability. However, as one of the fastest-growing regions in the world, ASEAN also sees many new opportunities including digitalisation and the growth of a green economy.

As a Social Business Innovator, part of the work we do at Hitachi is to respect planetary boundaries and protect the earth. By embodying our core values of Harmony, Sincerity, and Pioneering Spirit, we are constantly challenging ourselves to think out-of-the-box for new ideas, new solutions, and new technologies. Since Hitachi's inception in 1910, we have been guided by our mission to contribute to society. And it is our vision to answer society's challenges and inspire other stakeholders to co-create solutions with us that will actualise people's wellbeing.

For more than 30 years since Hitachi Asia was first established in Singapore, we have been supporting ASEAN's growth towards its social and economic development. But more importantly, we want to provide people with healthy and comfortable lives, supported by safe and secure social infrastructures. Not just for this generation, but for the many generations to come.

In line with our newly launched 2024 Mid-term Management Plan, Hitachi's focus in the next three years is in the areas of Green, Digital and Innovation.

Unlike other companies, Hitachi's greatest strength lies in our diverse workforce with different expertise. Our core values spur us to work together with one mind, one spirit, one Hitachi. By uniting the various

Hitachi Group of Companies, we are one of the few companies in the world to provide customers with a total solution. Together, we hope to achieve a decarbonised society that is harmonised with nature.

By leveraging on data and technologies through Hitachi's century worth of expertise in OT x IT x Products, Hitachi is committed to building a secure and comfortable world provided by Lumada.

For example, the Lumada Center Southeast Asia in Thailand will serve as a platform to facilitate the co-creation of customised digital solutions and new value to suit different business needs and drive digital innovation across various sectors. Through the Lumada Center, Hitachi hopes to create a sustainable economy that will better serve the needs of customers in this region and beyond.

”
**As we look to the next three years,
Hitachi will continue to play a
pivotal role as a technology
innovator in the eco-system to
accelerate green transformation
in ASEAN.**

TAKATOSHI SASAKI
Managing Director





Hitachi in Asia

Hitachi in Asia

Business Groups

- ▶ Digital Systems & Services
- ▶ Green Energy & Mobility
- ▶ Connective Industries
- ▶ Automotive Systems Business

Recent Achievements

Hitachi in Asia

138 Companies
33,310 Employees



As of 31 Mar 2022

Branches and representative offices are not included as the number of companies

Digital Systems & Services

To compete in today's fast-paced business environment, harnessing the right technology is essential for a successful digital transformation. At Hitachi, we are at the forefront of Information and Communications Technology (ICT), helping to foster changes throughout today's digital ecosystem to serve superior digital customer services.

Our solutions are engineered to help customers innovate faster and manage their business better. Leveraging our smart solutions and our competency in cloud computing, Internet of Things (IoT), Data Analytics, Artificial intelligence (AI), we are revolutionising the way companies do business.

We build safe, secure, resilient, and intelligent solutions for the leaders of tomorrow.



Business & ICT/IoT Solutions Integration

Consulting, Business Applications, ICT Infrastructure & System Integration, Integrated IoT Sensors & Subsystems



Mission-Critical Financial Solutions

Customised Core Systems for Financial Institutions, Insurance and Securities



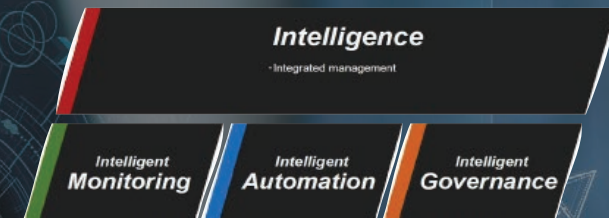
AI and Data Analytics

AI-based Decision-Making Support in Various Industries Through Structured and Non-structured Data Analysis



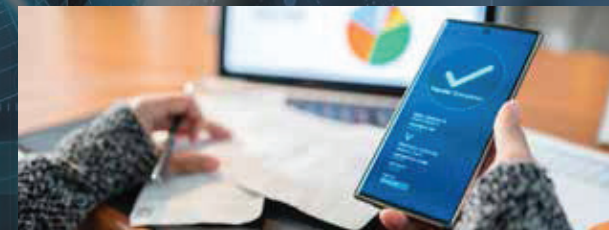
Cloud Storage and Data Management

Infrastructure, Data and Application Modernisation, Data-Driven Industrial Operations



Systems Management Solutions

One-Stop Service to Cover All IT Life Cycles



Next Generation Financial Services

Microservices for Banking and Insurance, Highly Reliable ATMs with Managed Services, Digital Payment Services with Transaction Gateway Partners Across Industries.

Green Energy & Mobility

At Hitachi, we are innovators at developing mobility solutions such as transportation solutions.

Our solutions are engineered to enhance the comfort and flexibility of moving people from one place to another reliably and safely.

And this has led us to a greater need for sustainable power. Therefore Hitachi is on a mission to provide cutting-edge power generation and management solutions for companies in this region and beyond.

From new technologies like solar and wind to energy storage systems, to distribution transformers for power plants and developing a carbon-neutral energy system, we are pioneers in renewable power and smart management solutions.

We try to achieve carbon neutrality through delivering green energy and mobility, thereby ensuring the happiness of people around the globe.



Railway Systems

Rolling Stock and Signalling, Rail Static Frequency Converters, Service & Digitalisation



Solar Energy Applications

Solar-powered factories, Power inverters for mid- to utility-scale solar plants



eMobility

Grid-eMotion™ Fleet for buses/trucks



Power Grid and Energy

Grid Automation, Grid Integration, High Voltage Products including EconIQ™, Transformers, Digital substation



Intelligent Grid Management

Battery Energy Storage System (BESS), e-mesh™ Microgrid controls



High Voltage Direct Current (HVDC)

HVDC Light (Up to 640 kV & 3,000MW), HVDC Classic (1,000 – 12,000 MW), Ultra High-Voltage DC (800 to 1,110 kV), converter stations

Connective Industries

Infrastructure is the building block of modern society and urban lifestyles. At Hitachi, we provide industrial systems and equipment across Asia.

Developed with over 110 years of experience and fuelled by our passion to drive positive impact, our solutions are engineered to make your lives safer, more productive, and comfortable.

Whether it is wastewater solutions, healthcare, building systems such as elevators and escalators or air compressors, our solutions help to power the modern world we live in today.

We help to revolutionise the world and improve the way we live.



Building Systems

Elevators, Escalators and Moving Sidewalks



Industrial Equipment

Air Compressor, Process Compressor, Industrial Transformer, Marking System



Semiconductor Solutions

Semiconductor Metrology, Inspection Equipment, Semiconductor Manufacturing from Processing, Testing to Measurement and Failure Analysis



Healthcare

Proton Beam Therapy, Automated Cell Culture Equipment, Electron Microscopes, Clinical Chemistry and Immunochemistry Analyser



Water and Wastewater Solutions

Reverse Osmosis (RO) Desalination Systems, Wastewater Treatments, Ultrapure Water



Robotic SI

Multi-axis Robotic Arms, Automated Cells, or Conveyance

Automotive Systems Business

As the world moves towards sustainability, the need for innovative mobility has never been greater. At Hitachi, our solutions are geared towards higher efficiency and a cleaner environment through electrification.

We provide advanced mobility solutions including electric powertrains for automobiles, advanced chassis and autonomous driving assistance systems that are more environmentally sustainable, with enhanced safety and comfort.

By harnessing technologies of the future, we are leading this era of innovation to help contribute towards a sustainable society.



Motorcycle Systems

Powertrain Systems, Suspension Systems and Brake Systems



Powertrain Systems

Internal Combustion Engine (ICE), Autonomous Driving / Advanced Driver Assistance Systems (AD/ADAS), EV Powertrain Systems



Chassis Systems

Brake Systems, Suspension Systems, Steering Systems and Drivetrain Systems



Aftermarket Products

We offer the same high performance aftermarket parts as our OEM products to all over the world

Recent Achievements

01

CONNECTIVE INDUSTRIES Fighting Cancer

To support Singapore's fight against cancer, Hitachi is supplying the Proton Beam Therapy (PBT) system to the National Cancer Centre Singapore (NCCS). The PBT is a cutting-edge cancer treatment that reduces the side effects commonly found in conventional radiotherapy. As the first PBT system in Singapore and Southeast Asia, Hitachi hopes to continue this collaboration with medical professionals and institutions in the region to further improve people's quality of life.



02

CONNECTIVE INDUSTRIES Providing Clean Water

As one of the Sustainable Development Goals (SDGs), clean water and sanitation are essential to people's well-being. For this reason, Filinvest Development Corporation (FDC) and Hitachi Aqua-Tech Engineering Pte. Ltd. entered a joint venture agreement for a new water solution company named, "Filinvest Hitachi Omni Waterworks Inc." (FLOW), that will provide overall water solutions across the Republic of the Philippines.

The main business of FLOW will focus on water treatment facilities, including desalination, recycled water and sewage treatment for internal and external customers, in both the public and private sectors.

03

DIGITAL SYSTEMS & SERVICES Digitising Payment Procedures

In 2017, Hitachi partnered with the Vietnamese state post office to digitise social security subsidy payment procedures. Since then, Hitachi implemented a comprehensive cashless e-payment method for Vietnamese citizens to collect their pension and social security payments. This has not only benefited 2.5M Vietnamese citizens across 63 provinces*, but it has also brought much convenience to the people's way of life. Hitachi hopes to realise a society where such necessary and essential services for daily life are easily available in Vietnam and beyond.

* Source: Data retrieved from e-money payment system, as of July 2021.



Recent Achievements

04

DIGITAL SYSTEMS & SERVICES Providing Financial Solutions

In the past, ATMs only provided traditional banking services, such as the withdrawal and deposit of cash. Today, the ATM machines can make bill payments, e-commerce transactions and money transfers both domestically and internationally.

Hitachi's partnership with a state-owned bank in Thailand has brought greater convenience to users by making cash transactions easier, safer, and faster. Additionally, Hitachi ATMs can also deliver richer and more personalised contents to individual users. All thanks to Hitachi, Thailand is well on its way to becoming a cashless society.



05

GREEN MOBILITY & ENERGY Alleviating Congestion

Bangkok is notorious for its traffic congestions, where vehicle exhausts have been causing serious air pollution. To elevate the environmental quality in the Southeast Asian metropolis, urban planners have turned to advanced transit systems - as such the Bangkok Red Line - to alleviate its congestion burdens.

As a fully elevated rail system, the Red Line links the Bang Sue Grand Station to the North Line and the West Line. This has helped relieve Bangkok's on-the-road vehicle population that is not only more sustainable but also environmentally friendly. More importantly, its impact has evidently helped improve urban welfare by balancing the affordability* for the city's daily commuters.

* Source: United Nations Economic and Social Commission for Asia and the Pacific

06

GREEN MOBILITY & ENERGY Supplying Electricity

As the world's fastest-growing country, Indonesia is the biggest energy user in Southeast Asia. Specifically, residents in eastern Indonesia currently have limited access to electricity, with up to 56% of households having inadequate or no electricity access.

Supporting the government's efforts to provide electrification in remote areas, Hitachi Energy worked hard to secure power supply for more than 2,900 homes on the island, reduce operation costs, while also lowering environmental impact for a cleaner and greener future.



About Sustainability & CSR

Christmas on A Great Street

Hitachi Plays Santa

Hitachi Young Leaders Initiative

STEM Education



Christmas on A Great Street



Since 1991, Hitachi has been bringing year-end festivities to life on the famed shopping street through the sponsorship of the yearly light-up for Christmas on A Great Street.

This sponsorship truly echoes our social values, and we look forward to this meaningful and exciting event every year. Along with the sponsorship, Hitachi and its Group of Companies in Singapore come together yearly to fundraise and support more than 100 social service agencies through Community Chest.



Hitachi Plays Santa

Started in 2017, Hitachi Plays Santa is a ground-up initiative that supports various social causes in Singapore. Aply named, employees are invited to the event each year to spread love, hope and cheer to the less fortunate during the festive season.

Akin to many other initiatives within Hitachi, Hitachi Plays Santa is a natural extension of our mission to contribute to the society as we believe that “Powering Good” starts within. We hope activities like these can deliver the goodness that everyone deserves and inspire those within our community to do the same.



Hitachi Young Leaders Initiative

Established in 1996, the Hitachi Young Leaders Initiative (HYLI) is a regional thought leadership and social responsibility programme organised by Hitachi with the aim of helping Asia nurture its future leaders by providing a platform for bright university students. Four of the best and brightest university students from each participating country meet to discuss current regional and global issues. They also exchange views with prominent speakers who are the Asian leaders of today, representing governments, business and academic.

Since its inauguration in Singapore in 1996, HYLI has offered over 370 students from eight countries, the unique opportunity to broaden their outlook while promoting cross-cultural understanding. Students come from Indonesia, Malaysia,

Japan, the Philippines, Singapore, Thailand, Vietnam and Myanmar.

In 2022, HYLI was held under the theme of “Social Innovation in the New Normal”. Key issues addressed were (1) Future Cities, (2) Clean Energy, (3) Water Solutions, and (4) Human Health. HYLI reflects Hitachi’s long-term commitment to Asia in providing an opportunity for young leaders to become more involved in creating the kind of societies in which they would like to live.

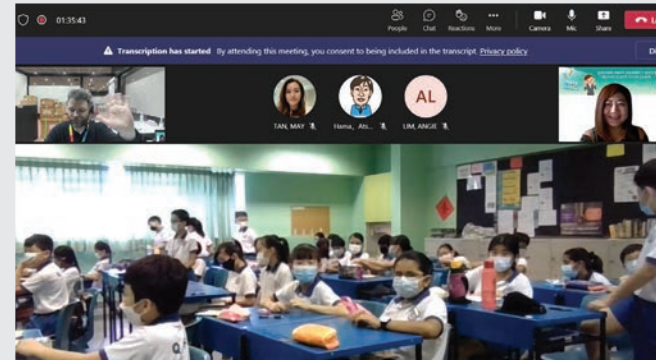


STEM Education

At Hitachi, we believe that Science, Technology, Engineering, and Mathematics (STEM) education is critical for our future, and we are committed to nurture and inspire the next generation of innovators. Recognising this increasing need, Hitachi Asia, partnering with Hitachi High-Tech, brought STEM education alive and created opportunities for students to explore the wonders of the microscopic world through the One Hitachi STEM Education Programme.

Held in Qifa Primary School from 4 – 14 April 2022, each session of the STEM education activity was conducted virtually by linking 3 different locations across Japan and Singapore. While our colleagues from the Hitachi High-Tech team in Japan provided the access and support to allow students to have remote control to the TM4000 equipment [a Scanning Electron Microscope (SEM)], the local team from Hitachi High-Tech Singapore and Hitachi Asia delivered the STEM lesson in school and assisted the students in virtually controlling the equipment for better viewing and discovery of each specimen collected.

Through these interactive and engaging hour-long sessions conducted for over 200 students, the enthusiasm, curiosity and interest levels of the students has kept the Hitachi team amazed and determined to do more for STEM education in the future. Plans of expanding this programme to our regional countries are also underway to ensure that we can reach out to every child. Together as One Hitachi, we are committed to contribute towards the success of SDG Goal 4, Quality Education through powering good with STEM education.



Directory

Indonesia

Malaysia

Myanmar

Philippines

Singapore

Thailand

Vietnam





Monumen Nasional



INDONESIA

PT. Hitachi Asia Indonesia
PT. Hitachi Astemo Bekasi Auto Parts
PT. Hitachi Astemo Bekasi Brake Systems
PT. Hitachi Astemo Bekasi Manufacturing
PT. Hitachi Astemo Bekasi Powertrain Systems
PT. Hitachi Channel Solutions Indonesia
PT. Hitachi Construction Machinery Indonesia

PT. Hitachi Consulting Indonesia
PT. Hitachi eBworx Indonesia
PT. Hitachi High Tech Indonesia
PT. Hitachi Metals Indonesia
PT. Hitachi Plant Technologies Indonesia
PT. Hitachi Power Systems Indonesia
PT. Hitachi Sakti Energy Indonesia

PT. Hitachi Sunway Information Systems Indonesia
PT. Bradken Indonesia
PT. Chemco Harapan Nusantara
PT. Hexindo Adiperkasa Tbk
Hitachi Vantara Pte Limited Indonesia Representative Office*
Sierra Atlantic Indonesia. PT.

* Branch and Representative Office

As of 31 Mar 2022



Petronas Twin Towers



MALAYSIA

Hitachi Asia (Malaysia) Sdn. Bhd.
 Hitachi Astemo Malaysia Sdn. Bhd.
 Hitachi Cable (Johor) Sdn. Bhd.
 Hitachi Construction Machinery (Malaysia) Sdn. Bhd.
 Hitachi Digital Host Sdn. Bhd.
 Hitachi eBworx Sdn. Bhd.
 Hitachi Electronic Products (Malaysia) Sdn. Bhd.
 Hitachi Elevator Engineering (Malaysia) Sdn. Bhd.
 Hitachi Energy Malaysia Sdn. Bhd.
 Hitachi High-Tech IPC (Malaysia) Sdn. Bhd.
 Hitachi Industrial Equipment (Malaysia) Sdn. Bhd.
 Hitachi International Treasury (Malaysia) Sdn. Bhd.

Hitachi Rail STS Malaysia Sdn. Bhd.
 Hitachi Solutions Asia Pacific (Malaysia Branch)*
 Hitachi Sunway Data Centre Services Sdn. Bhd.
 Hitachi Sunway Information Systems Sdn. Bhd.
 Hitachi Systems Digital Services (Malaysia) Sdn. Bhd.
 Hitachi Vantara (Malaysia) Sdn. Bhd.
 Adv Fusionex Sdn. Bhd.
 Bradken Castings (Malaysia) Sdn. Bhd.
 Fusionex Academy Sdn. Bhd.
 Fusionex Capital Sdn. Bhd.
 Fusionex Connect Sdn. Bhd.
 Fusionex Corp Sdn. Bhd.

Fusionex Innovations Sdn. Bhd.
 Fusionex Solutions Inc. Sdn. Bhd.
 Fusionex Technology Sdn. Bhd.
 Fusionex Trade Sdn. Bhd.
 Fusiotech Holdings Sdn. Bhd.
 FX Cloud Sdn. Bhd.
 FX Dftz Eservices Sdn. Bhd.
 FX Smart Solutions Sdn. Bhd.
 Hokenso Sdn. Bhd.
 MHPT Engineering Sdn. Bhd.
 Ventyx Shared Services (Malaysia) Sdn. Bhd.

* Branch and Representative Office

As of 31 Mar 2022



Shwedagon Pagoda



MYANMAR

Hitachi Asia Ltd. Myanmar Branch*
Hitachi Elevator (Myanmar) Co., Ltd.

Hitachi Energy (Thailand) Limited (Myanmar Branch)*

Hitachi Soe Electric & Machinery Co., Ltd.

As of 31 Mar 2022

** Branch and Representative Office*



University of Santo Tomas



PHILIPPINES

Hitachi Asia Ltd. Philippines Branch*
 Hitachi Astemo Philippines Corporation
 Hitachi Cable Philippines, Inc.
 Hitachi Construction Machinery/Philippines Branch*
 Hitachi Digital Payment Solutions Philippines, Inc.
 Hitachi Elevator Philippines Corporation

Hitachi Ltd Philippine Branch*
 Hitachi Metals Singapore Pte. Ltd.- Philippine Representative Office*
 Hitachi Plant Construction Ltd. Philippine Branch*
 Hitachi Solutions Philippines Corporation
 ABB Powergrids Philippines, Inc.
 Fusionex, Inc.

Himap Properties Corp.
 Megalinks, Inc.
 Mincom, Inc.
 San Technology, Inc.

As of 31 Mar 2022

* Branch and Representative Office



Marina Bay Sands



SINGAPORE

Hitachi Asia Ltd.
 Hitachi Aqua-Tech Engineering Pte. Ltd.
 Hitachi Astemo Aftermarket Singapore Pte. Ltd.
 Hitachi Construction Machinery Asia And Pacific Pte. Ltd.
 Hitachi Consulting Asia Pacific Pte. Ltd.
 Hitachi Consulting Singapore Pte. Ltd.
 Hitachi eBworx International Pte. Ltd.
 Hitachi Elevator Asia Pte. Ltd.
 Hitachi Energy Singapore Pte. Ltd.
 Hitachi High-Tech (Singapore) Pte. Ltd.

Hitachi Infrastructure Systems (Asia) Pte. Ltd.
 Hitachi International Treasury Ltd.
 Hitachi Limited (Singapore Branch)*
 Hitachi Metals Singapore Pte. Ltd.
 Hitachi Solutions Asia Pacific Pte. Ltd.
 Hitachi Sunway Information Systems (Singapore) Pte. Ltd.
 Hitachi Systems Digital Services (Singapore) Pte. Ltd.
 Hitachi Systems Network Technologies Pte. Ltd.

Hitachi T&D Systems Asia Pte. Ltd.
 Hitachi Vantara (Singapore) Pte. Ltd.
 ECS Digital Pte Ltd.
 Fusionex Pte. Ltd.
 Globallogic Singapore Private Limited
 PSB Technologies Pte. Ltd.
 Sullair Asia Pte. Ltd.

As of 31 Mar 2022

** Branch and Representative Office*



Wat Phra Kaew



THAILAND

Hitachi Asia (Thailand) Co., Ltd.
 Hitachi Astemo Asia Ltd.
 Hitachi Astemo Ayutthaya Ltd.
 Hitachi Astemo Bangkok R&D Ltd.
 Hitachi Astemo Bangkok Trading Ltd.
 Hitachi Astemo Chonburi Auto Parts Ltd.
 Hitachi Astemo Chonburi Manufacturing Ltd.
 Hitachi Astemo Chonburi Powertrain Ltd.
 Hitachi Astemo Chonburi Regional Center Ltd.
 Hitachi Astemo Korat Ltd.
 Hitachi Astemo Korat Brake Systems Ltd.
 Hitachi Astemo Lamphun Ltd.
 Hitachi Astemo Rayong Ltd.

Hitachi Channel Solutions (Thailand) Co., Ltd.
 Hitachi Channel Solutions Holding (Thailand) Co., Ltd.
 Hitachi Construction Machinery (Thailand) Co., Ltd.
 Hitachi Construction Machinery Management Service (Thailand) Co., Ltd.
 Hitachi Consulting Services (Thailand) Ltd.
 Hitachi eBworx (Indo-China) Co., Ltd.
 Hitachi Elevator (Thailand) Co., Ltd.
 Hitachi Energy (Thailand) Limited
 Hitachi Energy Holding Limited
 Hitachi High-Tech (Thailand) Ltd.
 Hitachi High-Tech Amata Smart Services Co., Ltd.
 Hitachi Industrial Technology (Thailand) Ltd.
 Hitachi Metals (Thailand) Ltd.

Hitachi Solutions (Thailand) Ltd.
 Hitachi Solutions Holdings (Thailand) Ltd.
 Hitachi Sunway Information Systems (Thailand) Ltd.
 Hitachi Sunway Information Systems Holding (Thailand) Ltd.
 Hitachi Vantara (Thailand) Ltd.
 Fusionex Co., Ltd.
 Kent Meters (Thailand) Limited
 Siam-Hitachi Elevator Co., Ltd.
 Smart Factory & Services Holdings (Thailand) Co., Ltd.
 Stone Apple Technologies Company Limited
 Thai Hitachi Enamel Wire Co., Ltd.

As of 31 Mar 2022



Landmark 81

VIETNAM

Hitachi Asia (Vietnam) Company Limited
Hitachi Astemo Hanoi Co., Ltd.
Hitachi Astemo Hung Yen Co., Ltd.
Hitachi Astemo Vinh Phuc Co., Ltd.
Hitachi Cable Vietnam Co., Ltd.

Hitachi Elevator Vietnam Co., Ltd.
Hitachi Energy Vietnam Company Limited
Hitachi Metals Singapore Pte.Ltd. Hanoi Representative Office*
Hitachi Plant Technologies (Vietnam) Co., Ltd.
Hitachi Systems Vietnam Company Limited

Hitachi Vantara Vietnam Company Limited
The Representative Office of Hitachi Sustainable Energy Ltd. in HCMC*
Vietnam Yungtay Elevator Co., Ltd.

* Branch and Representative Office

As of 31 Mar 2022



Hitachi Social Innovation is **POWERING GOOD**

Infrastructure for life

How can we support the needs of everyone, everywhere?
Through digital and green technologies,
Hitachi is co-creating infrastructure that brings new value,
making a fulfilling life for people while protecting the needs of the planet.

<https://social-innovation.hitachi/en-sg/>